

TWE LET

Increasing the Developmental Impact of Labour Migration through Capacity Strengthening and Partnership






Last update: August 2020



TWE LET – WORKING TOGETHER FOR MIGRATION THAT BENEFITS ALL

Twe Let (meaning “hand in hand” in Myanmar language) is a project that focuses on the developmental role of migration. The project has two core components – community outreach and research and policy – that together aim to support migrants and their families to make informed migration decisions and actions to:

-  Improve their living conditions;
-  Help them out of poverty and;
-  Attain inclusive and sustainable development.



Participants identify the advantages and disadvantages of migration at a pre-migration outreach training in Mon State. © IOM 2018

Twe Let is implemented by a unique consortium of organisations that include the International Organization for Migration (IOM), the project’s managing partner; community outreach partners, Chin Human Rights Organization (CHRO), Mon Women’s Coalition (MWC) and Parami Development Network (PDN); research partners, the Centre for Economic and Social Development (CESD), Metta Development Foundation, and the Australian National University (ANU); and government partners, the Ministry of Labour Immigration and Population (MOLIP), and the Department of Rehabilitation under the Ministry of Social Welfare, Relief and Resettlement (MSWRR). The project’s micro-enterprise start-up activities also receive the technical

Funded by



support of Opportunities Now (ONOW); and Interconnect provides the project with monitoring and evaluation support. Twe Let is funded by the Livelihoods and Food Security Fund (LIFT). Twe Let successful first phase ran from June 2017 to June 2019. Now in its second phase until June 2021, Twe Let is being implemented in 35 townships in seven states and regions of Myanmar – Chin State, Dry Zone (Magway Region, Mandalay Region), Shan State, and Southeast (Kayin State, Mon State, Tanintharyi Region).

COMMUNITY OUTREACH COMPONENT

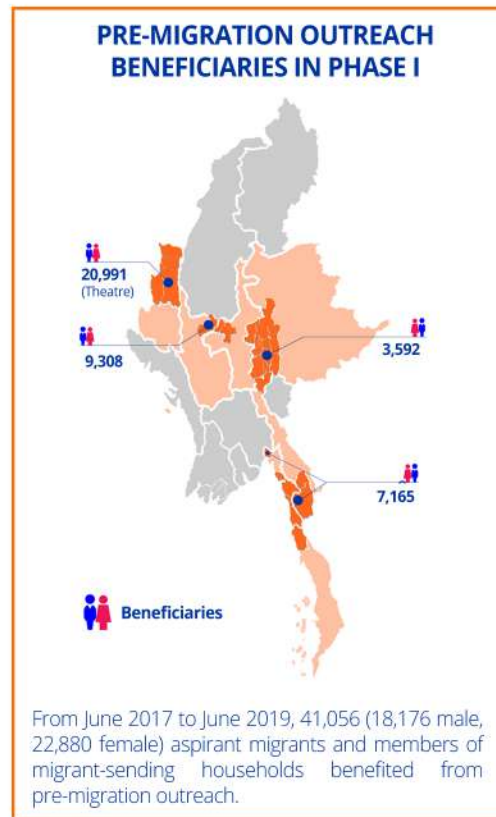
PRE-MIGRATION OUTREACH

Target beneficiaries in phase II: 32,324

Pre-migration outreach aims to support aspirant migrants and their families to make informed, strategic and safe migration decisions and actions in the context of their larger livelihood strategies. Key activities towards this include both village edutainment sessions such as migration-themed theatre shows, safe migration trainings, and safe migration awareness-raising campaigns.

COMMUNITY-LEVEL MIGRATION INFORMATION SOURCES

Migration Advise Centres (MACs) and Satellite Migration Advise Centres (SATMACs) – township and village level info centres which provide migration-related services and information – have been set up in project target areas so that anyone wanting to learn about migration may approach them for personalized migration advise. Two IOM-Department of Labour administered Migrant Resource Centres will also established on the Myanmar-Thailand (Myeik and Tachileik) border to support aspirant migrants in the area.



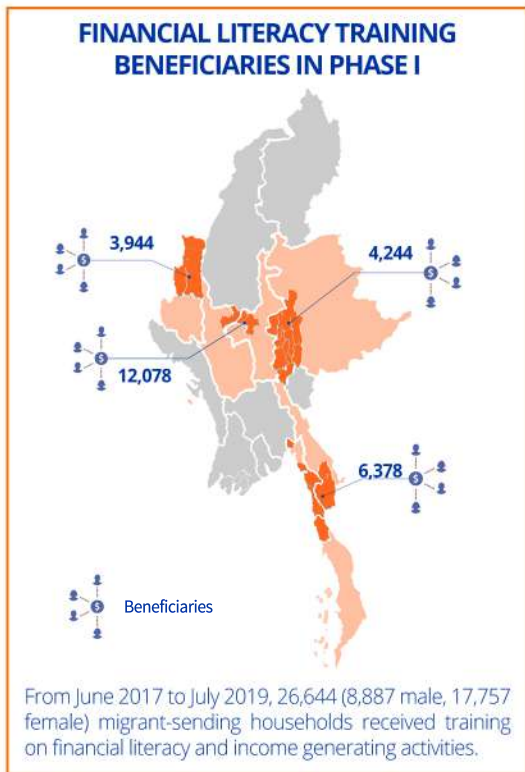
User testing the Miss Migration chatbot on safe migration procedures to other countries. © IOM 2020

These community-level resources are also complemented by Safe Migration Promoters (SMPs) – influential local people who volunteer their time to serve their communities as safe migration information focal points. An additional information resource is also available online through the Miss Migration chatbot – an interactive safe migration Facebook chatbot that aspirant migrants may consult with for their safe migration information needs. Miss Migration can automatically respond to user questions ranging from rules and regulations at destination, to procedures for regular and safe migration.

FINANCIAL LITERACY TRAININGS AND MICRO-ENTERPRISE START-UP

Target beneficiaries in phase II: 7,530

Financial literacy trainings target migrant-sending households and aim to equip them with financial knowledge and tools to better manage their money,



including remittances, so that they may apply it towards improving their livelihood. Beneficiaries are also being supported in starting community-based savings groups in order to take full advantage of remittances saved.

Having been equipped with financial management skills, migrant-sending households are also eligible for micro-enterprise/small business startup coaching. This consists of a coach making regular visits to participating households, in order to coach them in developing a business plan to start a small income generating activity in their community, financed by remittances saved.

SKILLS DEVELOPMENT TRAININGS FOR EMPLOYMENT AND SELF-EMPLOYMENT

Target beneficiaries in phase II: 1,700

Skills development trainings aim to empower aspirant migrants with marketable vocational

skills (e.g., hospitality, sewing, electrical wiring , etc.) with which to access decent work opportunities at internal and international destinations. The trainings also target members of migrant-sending households so that they may use the gained skills to expand livelihood opportunities through income generating activities in their home communities.

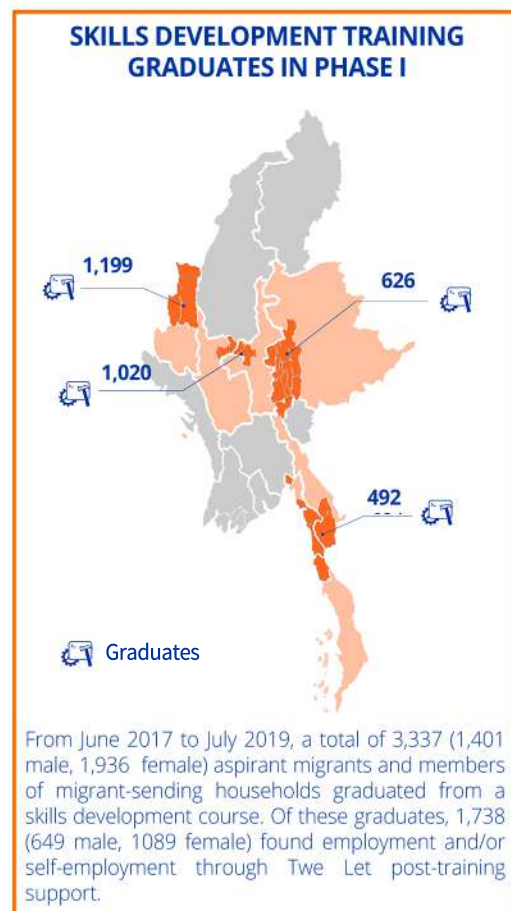
Graduates of skills development trainings also have access to a range of post-training support to help them to find employment, such as internships, job fairs, workplace visits and employers' workshops.

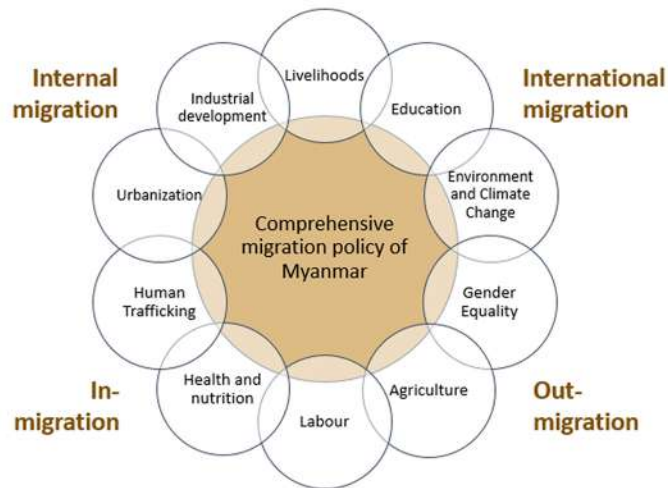
RESEARCH AND POLICY COMPONENT

POLICY

Policy outreach involves IOM's technical support to MOLIP's leading of a whole-of-government process to support the implementation of the Second National Plan of Action of the Management of International Labour Migration (2018-2022).

This involves raising awareness of the linkages between migration and development through consultations and workshops at the regional and state level with government, civil society and development actors, as well as the development of policy briefs based on consultation findings, dissemination of findings, and continued technical support to MOLIP and other ministries to gain their buy-in at all levels for the mainstreaming of migration into sectoral policies.





RESEARCH

IOM, CESD, Metta and ANU are implementing four studies to explore the linkages between migration and development through research on i) the challenges of migration-related population increases in urban areas; ii) on the community impacts of migration in conflict and post-conflict affected areas; iii) on migrant workers in informal labour sectors; and iv) on the efficacy of formal labour migration channels. Study findings aim to establish a strong evidence base for the development of more efficient migration and development policies, and each study is accompanied by policy uptake workshops to engage with and support policy actors to utilize the findings in their respective sectoral areas.



Two Let Mandalay workshop participants doing group work during the workshop. © IOM 2019

The project also aims to establish a migration-specific programmatic research area within CESD, so that it may continue strengthening the migration research evidence base for policy development in Myanmar, well beyond the lifecycle of the Twe Let project.

For more information, please contact

Labour Mobility and Human Development Unit, IOM Country Mission in Myanmar

Address: 50 B, Thiri Mingalar 2nd Street, Ward 8, Kamayut Township, Yangon
Tel: +95 1 7523509
Email: iomyangon@iom.int
Facebook: MissMigration

IOM Pakkoku (IOM Dry Zone Office)

Address: No.39, Yan Aung Myin Stret, Ward 10, Pakkoku.
Tel: 09 963 257 100
Email: nhlaing@iom.int

Mon Women's Coalition (MWC)

Address: No. 266, 21st Street, Myaingtharyar, Mawlamyine Township, Mon State
Tel: 09 425 365 525
Facebook: Twe-Let-MWC

Chin Human Rights Organization (CHRO)

Tel: 09 256 129 315
Facebook: CHROTweLetProject

Parami Development Network (PDN)

Address: No. 14, Sit Taung Street, Kan Shae Quarter, Taunggyi Township, Shan State.
Tel: 09 448 591 488
Facebook: PDN-Twe Let

Centre for Economic and Social Development (CESD)

Address: No. 27, Pyay Road, 6½ Mile, Hlaing Township, Yangon
Tel: (+95-1) 654770
Email: cesdcommunications@gmail.com
Facebook: MyanmarCesd

Australian National University (ANU)

Address: 13 Ellery Crescent, Beryl Rawson Building
The Australian National University, ACT 2600 Australia
Facebook: ANUMRC

Social Care Volunteer Group (SCVG) (Head Office in Magwe)

Address: No. 234, 13th Street, Yan Kyaw Quarter, Aung Chan Thar Ward, Magway, Magway Region, Myanmar.
Postal code: 04011
Phone number: 09 431 700 34,
Email address: info@scvg.org
Website: www.scvg.org
Facebook page: @SCVGinmyanmar